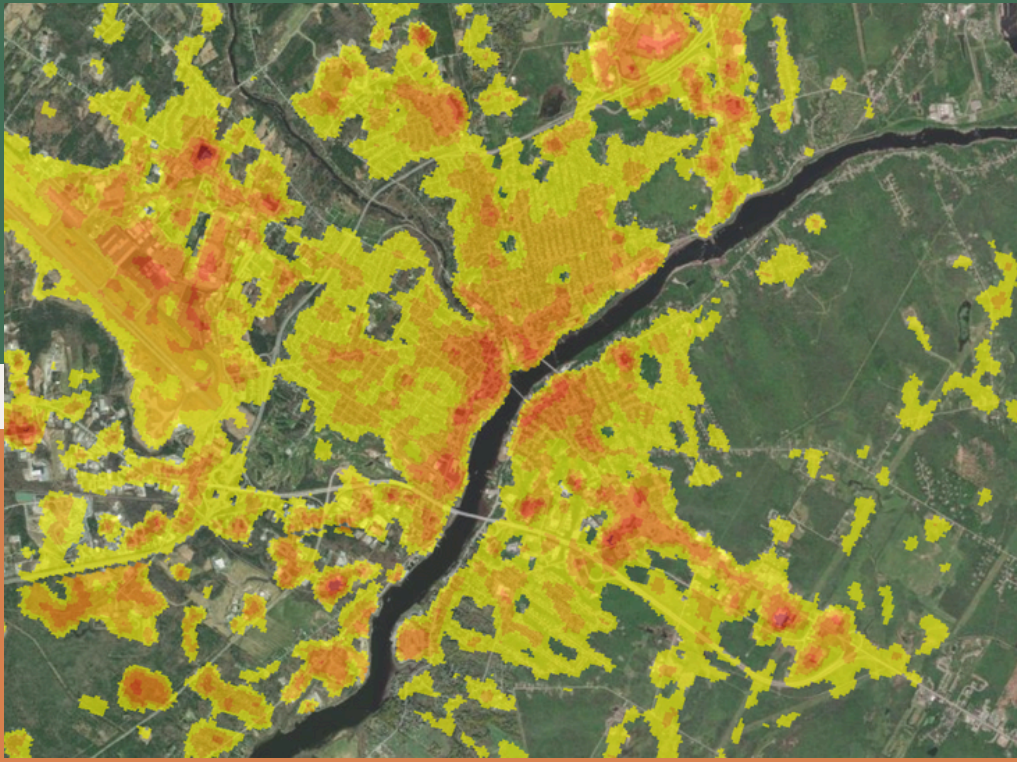




# PENOBSCOT CLIMATE ACTION

## PROJECT AREA



The project area includes the municipalities of Bangor, Bradley, Brewer, Hampden, Hermon, Milford, Old Town, Orono, Orrington, and Veazie as well as Penobscot Indian Island.

## PHASE 1 - COMPLETE!

The goal of the first phase was to determine what is at risk.

### Vulnerability Assessment

The region's resilience was analyzed to determine what infrastructure and communities are vulnerable to climate change impacts. This included collecting data on facilities, services, and populations as well as mapping projected climate hazards such as flooding, extreme heat, and extreme weather patterns.

### Greenhouse Gas Inventory

Greenhouse gas producing activities and facilities were tracked in order to calculate the region's current emissions profile including where emissions are coming from, what quantity is being produced, and what emissions are within our control to reduce.

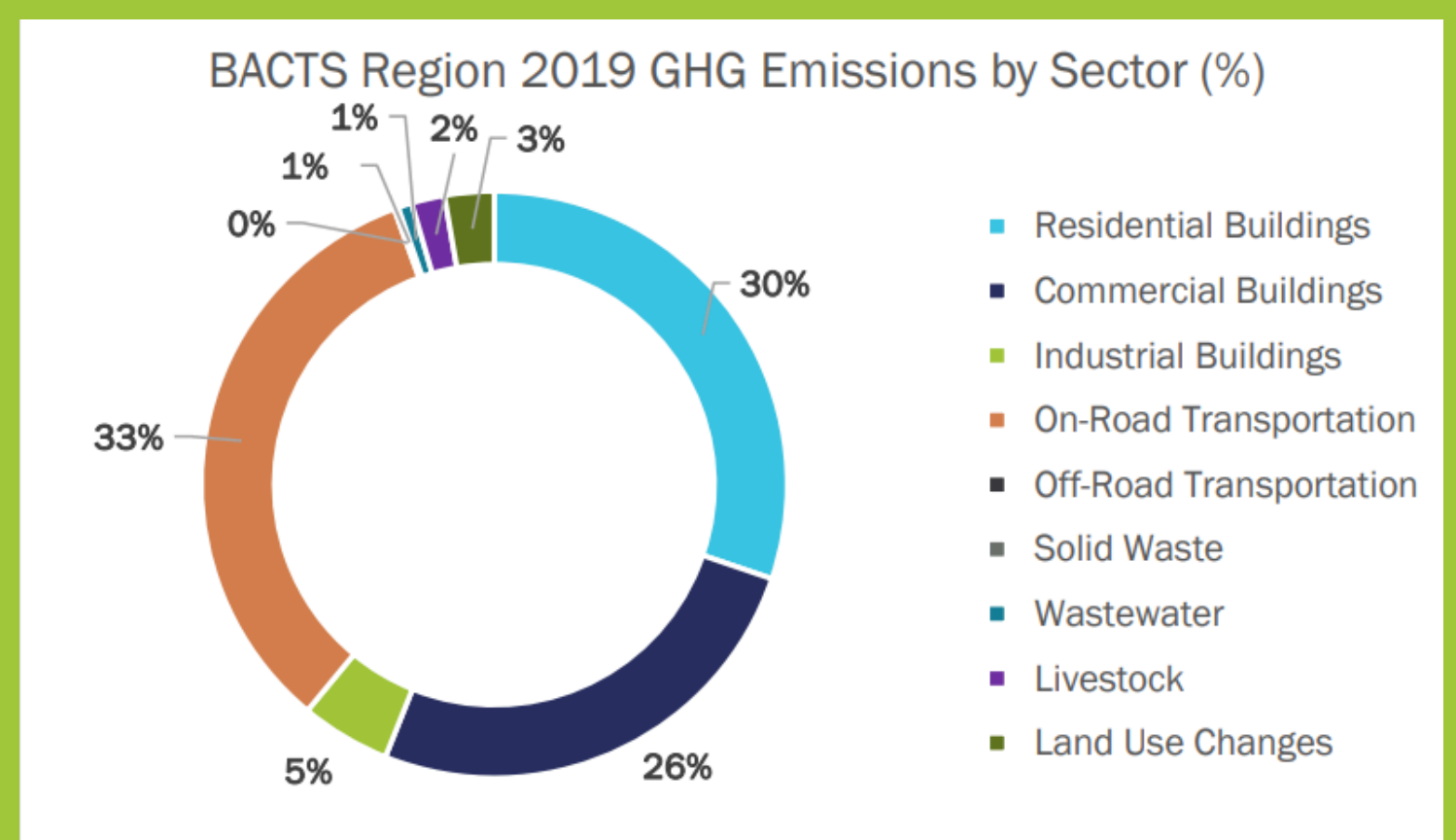
## MAJOR FINDINGS

### How will we experience climate change impacts locally?

- Rising Temperatures: The northeast is warming faster than any other region in the U.S.. This region will experience more extreme heat index days each year. Seasonal shifts will impact waterbodies, snow melt, and the freeze/thaw cycle.
- Extreme Precipitation and Inland Flooding: This area will see increases in intense, short duration precipitation events which create risk of flash flooding, especially in areas without adequate infrastructure capacity.
- More Frequent and Intense Storms: Shifts in the type and severity of storms we typically experience may include more extreme wind and more ice storms which can have very damaging impacts on homes, electricity infrastructure, roads, etc.
- Sea Level Rise: Maine is projected to experience 3.9 to 8.8 feet of sea level rise by the year 2100. The Penobscot River is tidally influenced which exposes the adjacent areas to sea level rise and corresponding storm surge.

### How does tracking emissions sources help us take action?

There are many ways to reduce greenhouse gas emissions. Specific strategies can be developed for different sectors (buildings, roads, agriculture, etc.) and for different interest groups (municipal government, residents, businesses, etc.) in order to efficiently allocate effort and resources.





# PHASE 2 - IN PROGRESS

The goal of Phase 2 is to develop specific strategies to address areas of vulnerability and reduce our greenhouse gas emissions. This phase will include extensive public outreach to identify community prioritized goals and outline what programs, policies, and projects can be implemented to achieve these goals. The strategies will largely target our 11 municipalities for implementation though coordination with other local partners will be crucial for success.

## SCHEDULE AND ACTIVITIES

Define Principles  
and Priorities

Mar - June 2023



*SURVEY*

*x3*

Co-Create  
Solutions

Jun - Oct 2023



*POP-UP EVENTS*

*10+*

Develop  
Strategies

Oct 23 - Feb 24



*WORKING GROUPS*

*x3*

Launch  
Toolkits

Jan- Mar 2024

## DELIVERABLES

**A Summary Report:** Outlines a regional vision for resilience and a list of strategies which could be implemented to reduce GHG emissions or address community/infrastructure vulnerabilities. Intended to include some low-hanging fruit options, mid term options, and aspirational ideas.

**Ten Climate Action and Adaptation Toolkits:** Provides a deep dive on ten of the recommended strategies. Will outline implementation resources such as funding opportunities, key partners, examples/precedent, action steps, cost estimates, associated emissions reductions, etc. Outlining these resources is meant to jumpstart implementation. These ten strategies were selected in coordination with our five working groups which were made up of interested residents, municipal partners, and local experts.

Visit [penobscotclimateaction.org](https://penobscotclimateaction.org) to find the Climate Vulnerability Assessment, GHG Emissions Inventory, Regional Data Map, and Basin Runoff Analysis. Also find monthly updates on our phase 2 efforts!

OR

Contact Madeline Jensen at: [madeline.jensen@bactsmppo.org](mailto:madeline.jensen@bactsmppo.org)



**PENOBSCOT**  
CLIMATE ACTION

